



PROTECTIVE WORKWEAR & HOSPITALITY

CATALOGUE *2026*

MEL ETSEBETH
DIRECTOR

✉ mel@jigsawmedia.co.za

☎ +27 (0)82 326 4430

🌐 www.jigsawmedia.co.za



CATALOGUE RANGE:

- ✦ Gifting & Stationery
- ✦ Work, School & Sports Apparel
- ✦ Protective Workwear & Hospitality
- ✦ Headwear
- ✦ Outdoor & Event Display
- ✦ Customise Bags & More





100% Acrylic

A soft, lightweight and warm synthetic fibre that is colourfast, wrinkle-resistant, and easy to care for.



NRCS Approved

Approved by the National Regulator For Compulsory Specifications.



Steel Toe Cap

Reinforced with a steel toe cap, offering additional protection against foot related injuries in the workplace.



100% Cotton

Extremely durable & comfortable. This natural fabric is hypoallergenic & breathable.



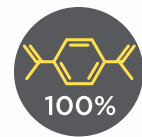
SABS Approved

Meets the highest standards for quality, safety & reliability.



Rainproof

Treated to repel & resist the penetration of water, even in the toughest wet weather conditions.



100% Polyester

Extremely durable & crease resistant. It's colourfast, quick drying & stain resistant. Easy to clean & maintain.



Day / Night Visibility

A combination of high visibility fabrics that are effective in low light conditions during the day & at night.



Water Resistant

Fabric has been treated to repel & resist the penetration of water, however, is not 100% waterproof.



Polycotton

A low maintenance blend that is breathable, crease resistant & colourfast. It's less prone to piling & shrinking.



Reflective

Premium quality reflective tape is applied for increased visibility in high-risk environments, at night & in poor light conditions.



Wind Resistant

Provides a barrier against the wind to reduce the loss of warmth and retain body heat in a cold climate.



Acid Resistant & Flame Retardant

A chemically treated fabric that resists the corrosive effects of acids & alkalis, with the addition of flame retardants for protection against fire hazards.



Heat Resistant 90°C

Offers protective thermal insulation in environments with temperatures as high as 90°C.



Windproof

Manufactured using a tightly woven fabric designed for insulation, warmth & comfort.



Acid Resistant

A chemically treated fabric that resists the corrosive effects of acids & alkalis in high-risk working environments.



Temperature -5°C

Offers protective thermal insulation in environments with temperatures as low as -5°C.



UV Protection

Manufactured with fabric rated for its high level of ultraviolet protection.



Flame Retardant

Chemically treated with flame retardants for protection against fire hazards.



Temperature -15°C

Offers protective thermal insulation in environments with temperatures as low as -15°C.



Taped Seams

Seams have been taped & heat sealed to enhance water-resistant properties.



Breathable

Allows air to pass through easily. Aids in moisture management, reduces sweat & keeps you cool.



Locally Manufactured

Proudly manufactured in South Africa.



Triple Stitched

Triple stitched at the seams for improved strength & durability.



Stretch Fabric

Flexible, versatile and comfortable providing greater comfort and freedom of movement.



Manufactured in the SADC Region

Manufactured in the Southern African Development Community (SADC). Increasing economic development & growth in 16 countries in SA.



Vented

Vented panels allow air to easily flow through the garment. Keeps you cool in high temperature environments.



Easy Care

Ideal for everyday wear. Requires low maintenance & is easy to clean & crease resistant.



Oil Resistant

Treated to resist the corrosive effects caused by oil & other oil-based agents.



YKK Zipper

World renowned for its reliability & durability.



CE Certified

Manufactured in compliance with health, safety & environmental protection standards.



Slip Resistant

Designed with slip resistant properties. Tested & approved to meet the highest quality standards for safety, comfort & reliability.



Zip-Off Sleeves

A 2-in-1 garment with a design that features convenient zip-off sleeves.



HOSPITALITY



Turn up the heat in a **FAST-PACED KITCHEN** with our **STYLISH AND FUNCTIONAL** range of **HOSPITALITY** wear. Ideal for restaurants, hotels, bakeries, canteens, butcheries, game lodges and beyond, this premium collection provides **ESSENTIAL PROTECTION AND COMFORT** for your team.



ALT-WAP
PROMO WAITERS APRON

Weight	200g/m ²
Fabric	polycotton twill
Description	half apron • front patch pocket • herringbone tape back ties
Colours	<input checked="" type="radio"/> BL <input type="radio"/> W
Width: 67cm	Length: 38cm



PRICE INCLUDES SCREEN PRINT. SEE **PAGE 3** FOR DETAILS.



HL-OK-119-B
OKIYO GOHAN COTTON APRON

Weight	240g/m ²				
Fabric	100% cotton				
Description	two front patch pockets • back ties				
Colours	NT				
Chest:	26.5cm	Width:	70cm	Length:	86cm

PRICE INCLUDES SCREEN PRINT. SEE PAGE 3 FOR DETAILS.

ALT-TRI
KIDS TRICKLE BIB APRON

Weight	200g/m ²
Fabric	polycotton twill
Description	adjustable neck strap • front patch pocket • back ties
Colours	<input checked="" type="radio"/> BL <input type="radio"/> W
Chest: 20cm	Width: 42cm Length: 66cm



PRICE INCLUDES SCREEN PRINT. SEE PAGE 3 FOR DETAILS.



NEW



ALT-PBA
PROMO BIB APRON

Weight	200g/m ²
Fabric	polycotton twill
Description	front patch pocket • back ties
Colours	<input type="radio"/> BL <input checked="" type="radio"/> G <input type="radio"/> GY <input type="radio"/> N <input type="radio"/> O <input type="radio"/> R <input type="radio"/> RB <input type="radio"/> W
Chest: 25cm	Width: 67cm Length: 85cm

PRICE INCLUDES SCREEN PRINT. SEE PAGE 3 FOR DETAILS.



BAS-2106
SLATER APRON

Weight 210g/m²

Fabric polycotton twill

Description double front pocket • back ties

Colours BL KH L N R SW

Chest: 28cm **Width:** 69cm **Length:** 97cm

PRICE INCLUDES SCREEN PRINT. SEE **PAGE 3** FOR DETAILS.



ALT-BLG
BOLGER BUTCHERS APRON

Weight	240g/m ²		
Fabric	100% cotton		
Description	classic butchers bib apron • adjustable neck strap • contrast back ties		
Colours	<input checked="" type="radio"/> N	<input checked="" type="radio"/> R	
Chest:	30cm	Width:	70cm
		Length:	87cm



ALT-CRW
CREW WAITERS APRON

Weight 6oz

Fabric 100% cotton

Description classic waiters apron • double front pockets secured with metal rivets

Colours DB

Width: 78.5cm **Length:** 41cm



altitude



ALT-CRB
CREW BIB APRON

Weight	6oz	
Fabric	100% cotton	
Description	neck straps through metal eyelets • chest pocket • side pocket	
Colours	DB	
Chest: 30cm	Width: 70cm	Length: 87cm

PRICE INCLUDES SCREEN PRINT. SEE **PAGE 3** FOR DETAILS.



METAL EYELETS WITH
HARDWARE BUCKLES



MULTI PATCH POCKETS
WITH DOUBLE FAUX
LEATHER HOLDER



HP-AL-15-A
OLIVER BIB APRON

Weight 240g/m²

Fabric 65% polyester, 35% cotton

Description stylish, durable and functional design • multi patch pockets with double faux leather holder • cross over canvas straps • metal eyelets with hardware buckles

Colours BL BU

Chest: 25cm **Width:** 65cm **Length:** 65cm





ALT-CNS
UNISEX SHORT SLEEVE CANNES UTILITY TOP



Weight 195g/m²

Fabric 65% polyester, 35% cotton

Description double breasted front panel with two press studs
• thermometer sleeve pocket

Colours BL W

HALF CHEST (CM)

SIZE	XS	S	M	L	XL	2XL	3XL	4XL	5XL
CM	53	56	59	62	65	68	71	74	77



PRICE INCLUDES EMBROIDERY. SEE PAGE 3 FOR DETAILS.



ALT-ZSS
UNISEX SHORT SLEEVE ZEST CHEF JACKET

Weight 195g/m²

Fabric 65% polyester, 35% cotton twill

Description double breasted with press studs • thermometer sleeve pocket

Colours BL W

HALF CHEST (CM)

SIZE	XS	S	M	L	XL	2XL	3XL	4XL	5XL
CM	47	52	57	62	67	72	77	82	87



PRICE INCLUDES EMBROIDERY. SEE **PAGE 3** FOR DETAILS.

ALT-GOR
UNISEX GORDON CHEF PANTS

Weight 195g/m²

Fabric 65% polyester, 35% cotton twill

Description elasticated waistband with drawcord and stopper • two side pockets • single back pocket

Colours BL

HALF WAIST (CM)

SIZE	XS	S	M	L	XL	2XL	3XL	4XL	5XL
CM	56	61	71	79	84	89	94	99	104



ALT-ZSL

UNISEX LONG SLEEVE ZEST CHEF JACKET



Weight 195g/m²

Fabric 65% polyester, 35% cotton twill

Description double breasted with press studs
• thermometer sleeve pocket

Colours



HALF CHEST (CM)

SIZE	XS	S	M	L	XL	2XL	3XL	4XL	5XL
CM	47	52	57	62	67	72	77	82	87



PRICE INCLUDES EMBROIDERY. SEE PAGE 3 FOR DETAILS.

A woman wearing a white chef's hat with "The Table" written on it and a white chef's jacket with black accents. She has her arms crossed and is looking towards the camera. The background is a kitchen with white subway tiles and stainless steel equipment.

ELEVATE YOUR
CULINARY
EXPERIENCE



DOUBLE BREASTED WITH CONTRAST COLOUR COLLAR



CONTRAST INNER CUFF



THERMOMETER SLEEVE POCKET



ALT-TLN
**UNISEX LONG SLEEVE
TOULON CHEF JACKET**

Weight 195g/m²

Fabric 65% polyester, 35% cotton

Description contrast collar and inner cuff • double breasted
• chest pocket • thermometer sleeve pocket

Colours W

HALF CHEST (CM)

SIZE	XS	S	M	L	XL	2XL	3XL	4XL	5XL
CM	53	56	59	62	65	68	71	74	77

PRICE INCLUDES SCREEN PRINT. SEE **PAGE 3** FOR DETAILS.



FIT FOR AN EXECUTIVE CHEF

ALT-DIJ
**UNISEX LONG SLEEVE
DIJON CHEF JACKET**

Weight 195g/m²

Fabric 65% polyester, 35% cotton

Description contrast piping at collar, front panel and cuff • double breasted • thermometer sleeve pocket

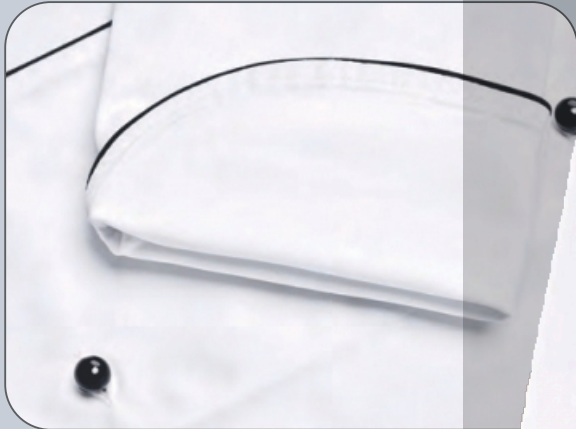
Colours W

HALF CHEST (CM)

SIZE	XS	S	M	L	XL	2XL	3XL	4XL	5XL
CM	53	56	59	62	65	68	71	74	77



DOUBLE BREASTED WITH CONTRAST PIPING AT COLLAR & FRONT PANEL



CONTRAST PIPING AT CUFF



THERMOMETER SLEEVE POCKET





ALT-FHC
MARRIOT POLYCOTTON HOUSECOAT

Weight 190g/m²

Fabric polycotton twill

Description open neck collar • 5 button closure • mitered chest pocket • two bottom pockets • bust darts • garment features top stitching and bar tacks at stress points • closed back, longer length garment

Colours KH N RB W

HALF CHEST (CM)

SIZE	S	M	L	XL	2XL	3XL	4XL
CM	51,5	55,5	59,5	63,5	67,5	71,5	75,5

PRICE INCLUDES SCREEN PRINT. SEE PAGE 3 FOR DETAILS.



ALT-AVL
AVALLON CHEF BEANIE

Weight 195g/m²

Fabric 65% polyester, 35% cotton

Description expandable elastic back

Colours BL W

EXPANDABLE ELASTIC BACK ON BOTH BLACK AND WHITE BEANIE



ALT-NMD
NORMANDY BANDANA

Weight 195g/m²

Fabric 65% polyester, 35% cotton

Description paneled head wrap • back ties

Colours BL W



CONTI SUITS

Choose from a selection of **CONTI SUITS**, designed with the latest **TECHNICAL FABRICS**, to provide your team with the **PERFORMANCE** and **PROTECTION** they need.



NEW
CT-AL-23-F
BUDGET CONTI SUIT

Weight 190g/m²

Fabric polycotton twill

Description **jacket:** open neck collar • front yoke panel • concealed zip
• monza style chest pocket • two side pockets
pants: elasticated back waist • five belt loops • two
slanted front pockets • back pocket

Colours **RB**

the suit size is based on the size of the jacket

SIZE

J*	32	34	36	38	40	42	44	46	48	50	52	54	56	58
P**	28	30	32	34	36	38	40	42	44	46	48	50	52	54

MEASUREMENTS

J*	41	43.5	46	48.5	51	53.5	56	58.5	61	63.5	66	68.5	71	73.5
P**	36	38.5	41	43.5	46	48.5	51	53.5	56	58.5	61	63.5	66	68.5

* JACKET HALF CHEST (CM)

** MATCHING PANTS HALF WAIST STRETCHED (CM)



ALT-1101
TRADE POLYCOTTON CONTI SUIT



Weight 190g/m²

Fabric polycotton twill

Description **jacket:** open neck collar • front yoke panel • concealed zip • monza style chest pocket • two side pockets • **pants:** elasticated back waist • five belt loops • two slanted front pockets • back pocket

the suit size is based on the size of the jacket

SIZE

J*	32	34	36	38	40	42	44	46	48	50	52	54	56	58
P**	28	30	32	34	36	38	40	42	44	46	48	50	52	54

MEASUREMENTS

J*	46,5	49	51,5	54	56,5	59	61,5	64	66,5	69	71,5	74	76,5	79
P**	36,8	39,1	41,4	43,7	46	48,3	50,6	52,9	55,2	57,5	59,8	62,1	64,5	66,7

Colours BL G GY KH N O R RB W

* JACKET HALF CHEST (CM) ** MATCHING PANTS HALF WAIST STRETCHED (CM)





TRADE POLYCOTTON REFLECTIVE CONTI SUIT

Weight 190g/m²

Fabric polycotton twill

Description **jacket:** open neck collar • front yoke panel • concealed zip • monza style chest pocket • two side pockets • **pants:** elasticated back waist • five belt loops • two slanted front pockets • back pocket

Colours



the suit size is based on the size of the jacket

SIZE

J*	32	34	36	38	40	42	44	46	48	50	52	54	56	58
P**	28	30	32	34	36	38	40	42	44	46	48	50	52	54

MEASUREMENTS

J*	46,5	49	51,5	54	56,5	59	61,5	64	66,5	69	71,5	74	76,5	79
P**	36,8	39,1	41,4	43,7	46	48,3	50,6	52,9	55,2	57,5	59,8	62,1	64,5	66,7

* JACKET HALF CHEST (CM) ** MATCHING PANTS HALF WAIST STRETCHED (CM)

REFLECTIVE ARMS & LEGS - YELLOW TAPE

yellow/silver 50mm reflective tape detail on arms and legs

PRE-TAPED AND IN STOCK*

ALT-11010-BL ALT-11010-G ALT-11010-GY ALT-11010-KH ALT-11010-O ALT-11010-R ALT-11010-W

ALT-1105-N ALT-1105-RB



REFLECTIVE ARMS & LEGS - ORANGE TAPE

orange/silver 50mm reflective tape detail on arms and legs

ALT-11011-BL ALT-11011-G ALT-11011-GY ALT-11011-KH ALT-11011-N ALT-11011-O ALT-11011-R ALT-11011-RB ALT-11011-W



*Navy and royal blue Conti Suits with yellow/silver 50mm reflective tape on arms and legs in this style are available immediately, ie with no lead times associated (unless branded). Reflective tape is added to all other relevant styles in the Altitude Workwear range upon placing an order and therefore will have an associated lead time.





TRADE POLYCOTTON REFLECTIVE CONTI SUIT



Weight 190g/m²

Fabric polycotton twill

Description **jacket:** open neck collar • front yoke panel • concealed zip • monza style chest pocket • two side pockets • **pants:** elasticated back waist • five belt loops • two slanted front pockets • back pocket

Colours BL G GY KH N O R RB W

the suit size is based on the size of the jacket

SIZE

J* 32 34 36 38 40 42 44 46 48 50 52 54 56 58

P** 28 30 32 34 36 38 40 42 44 46 48 50 52 54

MEASUREMENTS

J* 46,5 49 51,5 54 56,5 59 61,5 64 66,5 69 71,5 74 76,5 79

P** 36,8 39,1 41,4 43,7 46 48,3 50,6 52,9 55,2 57,5 59,8 62,1 64,5 66,7

* JACKET HALF CHEST (CM) ** MATCHING PANTS HALF WAIST STRETCHED (CM)

REFLECTIVE ARMS, LEGS & BACK - YELLOW TAPE

yellow/silver 50mm reflective tape detail on arms, legs and back

ALT-11012-BL ALT-11012-G ALT-11012-GY ALT-11012-KH ALT-11012-N ALT-11012-O ALT-11012-R ALT-11012-RB ALT-11012-W



BL

G

GY

KH

N

O

R

RB

W

REFLECTIVE ARMS, LEGS & BACK - ORANGE TAPE

orange/silver 50mm reflective tape detail on arms, legs and back

ALT-11013-BL ALT-11013-G ALT-11013-GY ALT-11013-KH ALT-11013-N ALT-11013-O ALT-11013-R ALT-11013-RB ALT-11013-W



BL

G

GY

KH

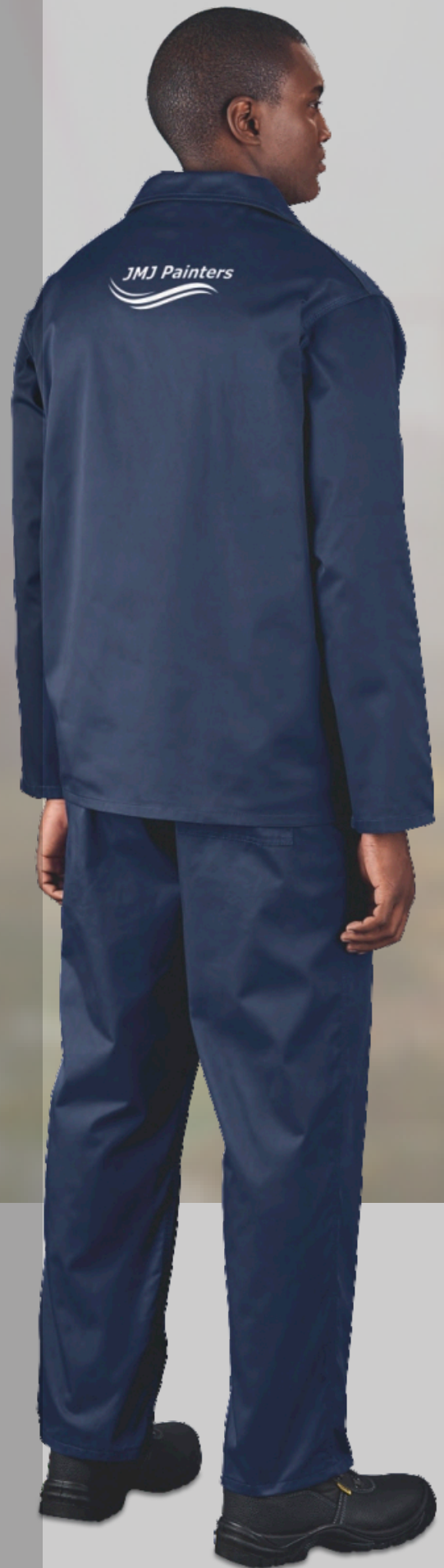
N

O

R

RB

W





NEW

CT-AL-22-F

PREMIUM POLYCOTTON CONTI SUIT

Weight 190g/m²

Fabric polycotton twill

Description **jacket:** open neck collar • front yoke panel • concealed zip • chest pocket features v-flap with press stud closure and pen pocket • two side pockets • triple-needle stitching • bar tacks at stress points • YKK zips **pants:** elasticated back waist • five belt loops • two slanted front pockets • back pocket • triple-needle topstitching • bar tacks at stress points • YKK zip

Colours



the suit size is based on the size of the jacket

SIZE

J*	32	34	36	38	40	42	44	46	48	50	52	54	56	58
P**	28	30	32	34	36	38	40	42	44	46	48	50	52	54

MEASUREMENTS

J*	46.5	49	51.5	54	56.5	59	61.5	64	66.5	69	71.5	74	76.5	79
P**	36.8	39.1	41.4	43.7	46	48.3	50.6	52.9	55.2	57.5	59.8	62.1	64.5	66.7

* JACKET HALF CHEST (CM) ** MATCHING PANTS HALF WAIST STRETCHED (CM)





ALT-1103

TECHNICIAN 100% COTTON CONTI SUIT

Weight 200g/m²

Fabric 100% cotton twill

Description **jacket:** open neck collar • front yoke panel • concealed zip • monza style chest pocket • two side pockets
pants: elasticated back waist • five belt loops • two slanted front pockets • back pocket

Colours



the suit size is based on the size of the jacket

SIZE

J*	32	34	36	38	40	42	44	46	48	50	52	54	56	58
P**	28	30	32	34	36	38	40	42	44	46	48	50	52	54

MEASUREMENTS

J*	48,5	51	53,5	56	58,5	61	63,5	66	68,5	71	73,5	76	78,5	81
P**	77	82	87	92	97	102	107	112	117	122	127	132	137	142

* JACKET HALF CHEST (CM) ** MATCHING PANTS WAIST STRETCHED (CM)



TECHNICIAN 100% COTTON REFLECTIVE CONTI SUIT

Weight 200g/m²

Fabric 100% cotton twill

Description **jacket:** open neck collar • front yoke panel • concealed zip • monza style chest pocket • two side pockets • **pants:** elasticated back waist • five belt loops • two slanted front pockets • back pocket

Colours **N** **RB**

the suit size is based on the size of the jacket

SIZE

J*	32	34	36	38	40	42	44	46	48	50	52	54	56	58
P**	28	30	32	34	36	38	40	42	44	46	48	50	52	54

MEASUREMENTS

J*	48,5	51	53,5	56	58,5	61	63,5	66	68,5	71	73,5	76	78,5	81
P**	77	82	87	92	97	102	107	112	117	122	127	132	137	142

* JACKET HALF CHEST (CM) ** MATCHING PANTS WAIST STRETCHED (CM)

REFLECTIVE ARMS & LEGS

YELLOW TAPE

yellow/silver 50mm reflective tape detail on arms and legs

ALT-11031-N

ALT-11031-RB



ORANGE TAPE

orange/silver 50mm reflective tape detail on arms and legs

ALT-11032-N

ALT-11032-RB



REFLECTIVE ARMS, LEGS & BACK

YELLOW TAPE

yellow/silver 50mm reflective tape detail on arms, legs and back

ALT-11033-N

ALT-11033-RB



ORANGE TAPE

orange/silver 50mm reflective tape detail on arms, legs and back

ALT-11034-N

ALT-11034-RB





ALT-1104
VINTAGE 100% COTTON DENIM CONTI SUIT

Fabric 100% cotton, 10oz denim

Description **jacket:** open neck collar • front yoke panel • concealed zip • monza style chest pocket • two side pockets
pants: elasticated back waist • five belt loops • two slanted front pockets • back pocket

Colours DB

the suit size is based on the size of the jacket

SIZE

J*	32	34	36	38	40	42	44	46	49	50	52	54	56	58
P**	28	30	32	34	36	38	40	42	44	46	48	50	52	54

MEASUREMENTS

J*	48,5	51	53,5	56	58,5	61	63,5	66	68,5	71	73,5	76	78,5	81
P**	77	82	87	92	97	102	107	112	117	122	127	132	137	142

* JACKET HALF CHEST (CM) ** MATCHING PANTS WAIST STRETCHED (CM)



VINTAGE 100% COTTON DENIM CONTI SUIT

REFLECTIVE ARMS & LEGS



YELLOW TAPE

yellow/silver 50mm reflective tape detail on arms and legs

ALT-11041-DB

ORANGE TAPE

orange/silver 50mm reflective tape detail on arms and legs

ALT-11042-DB



REFLECTIVE ARMS, LEGS & BACK



YELLOW TAPE

yellow/silver 50mm reflective tape detail on arms, legs and back

ALT-11043-DB

ORANGE TAPE

orange/silver 50mm reflective tape detail on arms, legs and back

ALT-11044-DB





ALT-1108



SAFETY POLYCOTTON BOILER SUIT

Weight 190g/m²

Fabric polycotton twill

Description open neck collar • concealed metal shank button placket • left chest pocket • slanted front pockets • back pocket • top stitching detail • bar tacks at stress points

Colours RB W

JACKET HALF CHEST (CM)

SIZE	32	34	36	38	40	42	44	46	48	50	52	54
CM	45,4	48	50,5	53	55,5	58	60,5	63	65,5	68	70,5	73



SAFETY POLYCOTTON BOILER SUIT

REFLECTIVE ARMS & LEGS

YELLOW TAPE

yellow/silver 50mm reflective tape detail on arms and legs

ALT-11081-RB

ALT-11081-W



ORANGE TAPE

orange/silver 50mm reflective tape detail on arms and legs

ALT-11082-RB

ALT-11082-W



REFLECTIVE ARMS, LEGS & BACK

YELLOW TAPE

yellow/silver 50mm reflective tape detail on arms, legs and back

ALT-11083-RB

ALT-11083-W



ORANGE TAPE

orange/silver 50mm reflective tape detail on arms, legs and back

ALT-11084-RB

ALT-11084-W





ALT-1106

ACID RESISTANT POLYCOTTON CONTI SUIT

Weight 190g/m²

Fabric acid resistant polycotton

Description **jacket:** open neck collar • front yoke panel • concealed zip • monza style chest pocket • two side pockets • **pants:** elasticated back waist • five belt loops • two slanted front pockets • back pocket • triple stitched back rise

Colours OL

the suit size is based on the size of the jacket

SIZE

J*	32	34	36	38	40	42	44	46	48	50	52	54	56	58
P**	28	30	32	34	36	38	40	42	44	46	48	50	52	54

MEASUREMENTS

J*	48,5	51	53,5	56	58,5	61	63,5	66	68,5	71	73,5	76	78,5	81
P**	77	82	87	92	97	102	107	112	117	122	127	132	137	142

* JACKET HALF CHEST (CM) ** MATCHING PANTS WAIST STRETCHED (CM)



ACID RESISTANT POLYCOTTON CONTI SUIT

REFLECTIVE ARMS & LEGS

YELLOW TAPE

yellow/silver 50mm reflective tape detail on arms and legs

ALT-11061-OL

ORANGE TAPE

orange/silver 50mm reflective tape detail on arms and legs

ALT-11062-OL

REFLECTIVE ARMS, LEGS & BACK

YELLOW TAPE

yellow/silver 50mm reflective tape detail on arms, legs and back

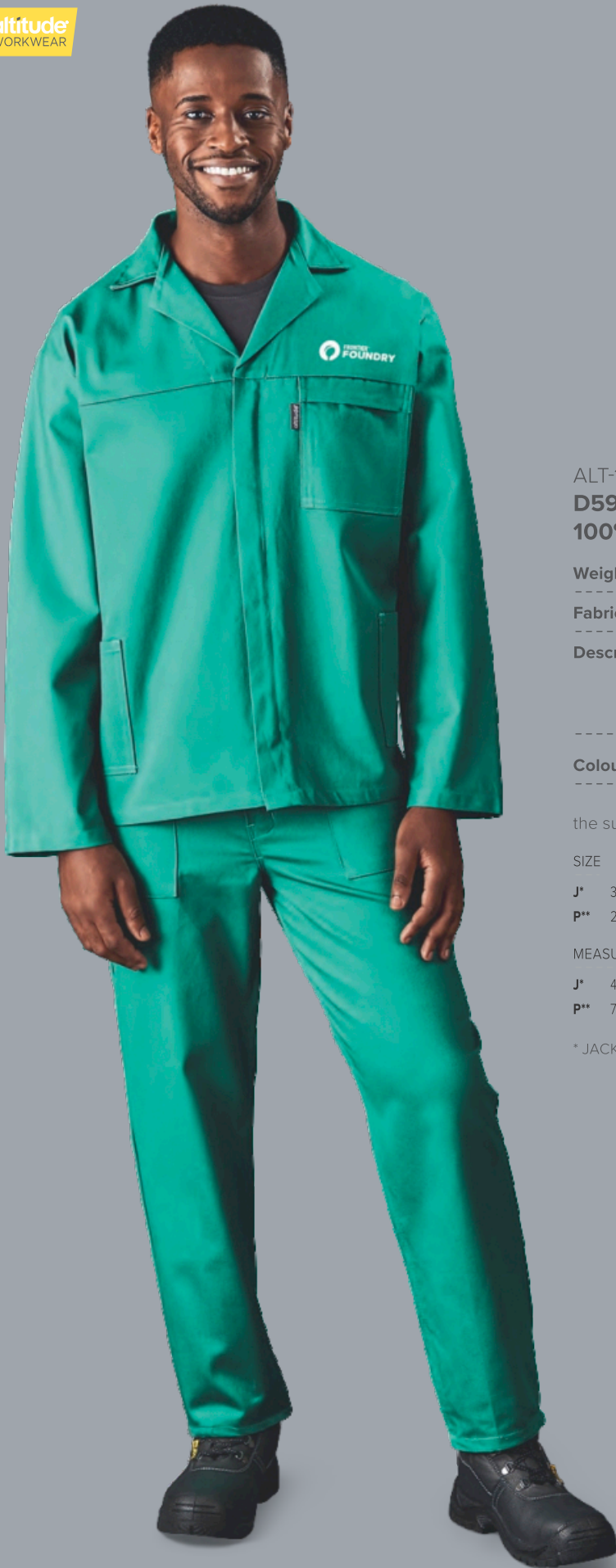
ALT-11063-OL

ORANGE TAPE

orange/silver 50mm reflective tape detail on arms, legs and back

ALT-11064-OL





ALT-1120
**D59 FLAME RETARDANT
100% COTTON CONTI SUIT**

Weight 200g/m²

Fabric 100% D59 flame retardant cotton twill

Description **jacket:** open neck collar • front yoke panel • concealed zip • monza style chest pocket • two side pockets
pants: elasticated back waist • five belt loops • two slanted front pockets • back pocket

Colours G

the suit size is based on the size of the jacket

SIZE

J*	32	34	36	38	40	42	44	46	48	50	52	54	56	58
P**	28	30	32	34	36	38	40	42	44	46	48	50	52	54

MEASUREMENTS

J*	48,5	51	53,5	56	58,5	61	63,5	66	68,5	71	73,5	76	78,5	81
P**	77	82	87	92	97	102	107	112	117	122	127	132	137	142

* JACKET HALF CHEST (CM) ** MATCHING PANTS WAIST STRETCHED (CM)





WORK JACKETS

& PANTS



With the option to mix and match our comprehensive selection of **WORK JACKETS AND PANTS**, you have the freedom to create a unique uniform or workwear solution that fits your needs. No matter the industry, our **PREMIUM SELECTION** offers **COMFORT, VERSATILITY AND QUALITY**.



SOLID COLOUR JACKET

ALT-1111-N

ALT-1111-RB



N



RB

TWO-TONE JACKET

front and back contrast yoke

ALT-1112-GY

ALT-1112-KH



GY



KH



SITE PREMIUM POLYCOTTON JACKET

Weight 235g/m²

Fabric 65% polyester, 35% cotton twill

Description open neck collar • front yoke panel
• concealed zip • chest pocket features V-flap with press stud closure and pen pocket • two side pockets • triple needle top stitching • bar tacks at stress points

HALF CHEST (CM)

SIZE	S	M	L	XL	2XL	3XL	4XL	5XL
CM	52,2	57	61,8	66,6	71,4	77,2	82	86,8



ALT-1113

SITE PREMIUM POLYCOTTON PANTS



Weight 235g/m²



Fabric 65% polyester, 35% cotton twill



Description elasticated back waist • five belt loops • two slanted front pockets • back pocket • triple needle top stitching • bar tacks at stress points

Colours N OL RB

WAIST STRETCHED (CM)

SIZE	28	30	32	34	36	38	40	42	44	46	48	50	52
CM	87	92	97	102	107	112	117	122	127	132	137	142	147





REFLECTIVE ARMS

YELLOW TAPE

yellow/silver 50mm reflective tape detail on arms

ALT-11111-N

ALT-11111-RB



ORANGE TAPE

orange/silver 50mm reflective tape detail on arms

ALT-11112-N

ALT-11112-RB



REFLECTIVE ARMS & BACK

YELLOW TAPE

yellow/silver 50mm reflective tape detail on arms and back

ALT-11113-N

ALT-11113-RB



ORANGE TAPE

orange/silver 50mm reflective tape detail on arms and back

ALT-11114-N

ALT-11114-RB



SITE PREMIUM POLYCOTTON REFLECTIVE JACKET



Weight 235g/m²



Fabric 65% polyester, 35% cotton twill



Description open neck collar • front yoke panel • concealed zip
• chest pocket features V-flap with press stud closure and pen pocket • two side pockets • triple needle top stitching • bar tacks at stress points



Colours N RB

HALF CHEST (CM)

SIZE	S	M	L	XL	2XL	3XL	4XL	5XL
CM	52,2	57	61,8	66,6	71,4	77,2	82	86,8



SITE PREMIUM POLYCOTTON REFLECTIVE PANTS

Weight 235g/m²

Fabric 65% polyester, 35% cotton twill

Description elasticated back waist • five belt loops • two slanted front pockets • back pocket • triple needle top stitching • bar tacks at stress points

Colours N OL RB

WAIST STRETCHED (CM)

SIZE	28	30	32	34	36	38	40	42	44	46	48	50	52
CM	87	92	97	102	107	112	117	122	127	132	137	142	147

REFLECTIVE LEGS - YELLOW TAPE

yellow/silver 50mm reflective tape detail on legs

ALT-11131-N

ALT-11131-OL

ALT-11131-RB



REFLECTIVE LEGS - ORANGE TAPE

orange/silver 50mm reflective tape detail on legs

ALT-11132-N

ALT-11132-OL

ALT-11132-RB





SITE PREMIUM TWO-TONE POLYCOTTON REFLECTIVE JACKET

Weight 235g/m²

Fabric 65% polyester, 35% cotton twill

Description front and back contrast yoke • open neck collar • front yoke panel • concealed zip • chest pocket features V-flap with press stud closure and pen pocket • two side pockets • triple needle top stitching • bar tacks at stress points

Colours GY KH

HALF CHEST (CM)

SIZE	S	M	L	XL	2XL	3XL	4XL	5XL
CM	52,2	57	61,8	66,6	71,4	77,2	82	86,8

REFLECTIVE ARMS

YELLOW TAPE

yellow/silver 50mm reflective tape detail on arms

ALT-11121-GY

ALT-11121-KH



ORANGE TAPE

orange/silver 50mm reflective tape detail on arms

ALT-11122-GY

ALT-11122-KH



REFLECTIVE ARMS & BACK

YELLOW TAPE

yellow/silver 50mm reflective tape detail on arms and back

ALT-11123-GY

ALT-11123-KH



ORANGE TAPE

orange/silver 50mm reflective tape detail on arms and back

ALT-11124-GY

ALT-11124-KH





SITE PREMIUM POLYCOTTON REFLECTIVE PANTS

Weight 235g/m²

Fabric 65% polyester, 35% cotton twill

Description elasticated back waist • five belt loops • two slanted front pockets • back pocket • triple needle top stitching • bar tacks at stress points

Colours **N** **OL** **RB**

WAIST STRETCHED (CM)

SIZE	28	30	32	34	36	38	40	42	44	46	48	50	52
CM	87	92	97	102	107	112	117	122	127	132	137	142	147

REFLECTIVE LEGS - YELLOW TAPE

yellow/silver 50mm reflective tape detail on legs

ALT-11131-N

ALT-11131-OL

ALT-11131-RB



REFLECTIVE LEGS - ORANGE TAPE

orange/silver 50mm reflective tape detail on legs

ALT-11132-N

ALT-11132-OL

ALT-11132-RB







PRESS STUD POCKET
CLOSURE & PEN POCKET
ON ORANGE & YELLOW
JACKETS



ALT-1109
**TRAFFIC PREMIUM TWO-TONE HI-VIZ
REFLECTIVE JACKET**

Weight 235g/m²

Fabric 65% polyester, 35% cotton twill • **contrast panels:** 50% cotton, 50% polyester interwoven fabric

Description front and back contrast panels • open neck collar • front yoke panel • concealed YKK zip with single press stud • chest pocket features V-flap with press stud closure and pen pocket • two front pockets • silver 50mm reflective tape detail • triple needle top stitching • bar tacks at stress points

Colours O Y

HALF CHEST (CM)

SIZE	S	M	L	XL	2XL	3XL	4XL	5XL
CM	52,2	57	61,8	66,6	71,4	77,2	82	86,8

ALT-1110
**TRAFFIC PREMIUM TWO-TONE HI-VIZ
REFLECTIVE PANTS**

Weight 235g/m²

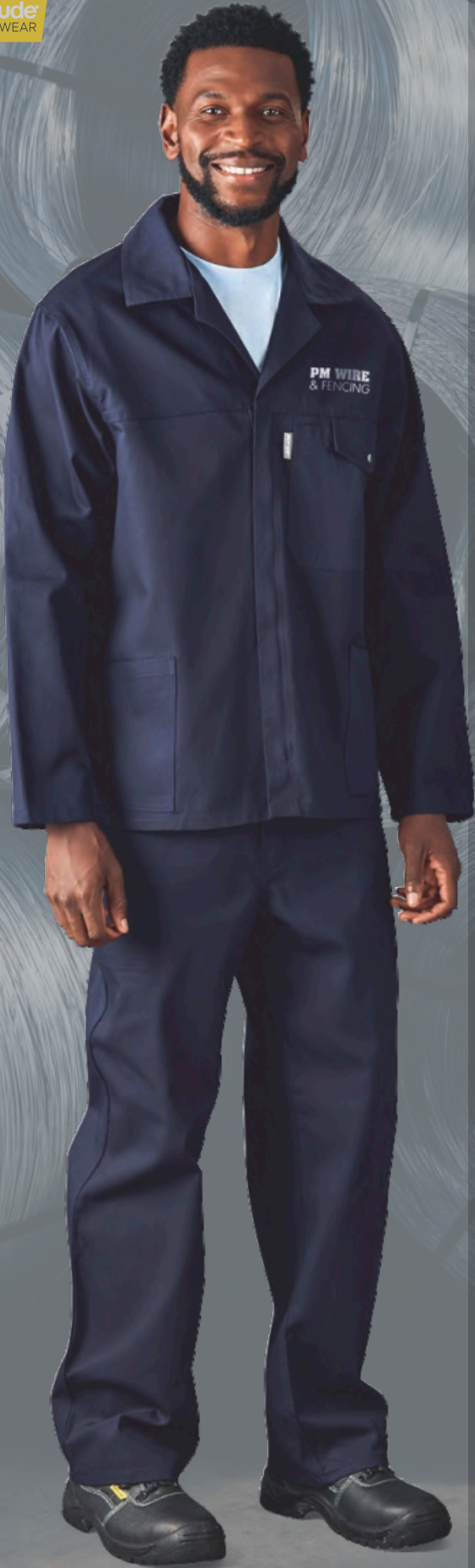
Fabric 65% polyester, 35% cotton twill • **contrast panels:** 50% cotton, 50% polyester interwoven fabric

Description contrast panels at mid leg • elasticated back waist • five belt loops • concealed YKK zip • two slanted front pockets • back pocket • silver 50mm reflective tape detail • triple needle top stitching • bar tacks at stress points

Colours O Y

WAIST STRETCHED (CM)

SIZE	28	30	32	34	36	38	40	42	44	46	48	50	52
CM	90	95	100	105	110	115	120	125	130	135	140	145	150





ALT-1114
ARTISAN PREMIUM 100% COTTON JACKET



Weight 200g/m²



Fabric 100% cotton twill



Description open neck collar • front yoke panel • concealed zip
• chest pocket features V-flap with press stud closure and pen pocket • two side pockets • triple needle top stitching • bar tacks at stress points

Colours



HALF CHEST (CM)

SIZE	S	M	L	XL	2XL	3XL	4XL	5XL
CM	52,2	57	61,8	66,6	71,4	77,2	82	86,8

ALT-1115
ARTISAN PREMIUM 100% COTTON PANTS

Weight 200g/m²

Fabric 100% cotton twill

Description elasticated back waist • five belt loops
• two slanted front pockets • back pocket
• triple needle top stitching • bar tacks at stress points

Colours



WAIST STRETCHED (CM)

SIZE	28	30	32	34	36	38	40	42	44	46	48	50	52
CM	87	92	97	102	107	112	117	122	127	132	137	142	147





ARTISAN PREMIUM 100% COTTON REFLECTIVE JACKET

Weight 200g/m²

Fabric 100% cotton twill

Description open neck collar • front yoke panel • concealed zip
• chest pocket features V-flap with press stud closure and pen pocket • two side pockets • triple needle top stitching • bar tacks at stress points

Colours N RB

HALF CHEST (CM)

SIZE	S	M	L	XL	2XL	3XL	4XL	5XL
CM	52,2	57	61,8	66,6	71,4	77,2	82	86,8

REFLECTIVE ARMS

YELLOW TAPE

yellow/silver 50mm reflective tape detail on arms

ALT-11141-N

ALT-11141-RB



ORANGE TAPE

orange/silver 50mm reflective tape detail on arms

ALT-11142-N

ALT-11142-RB



REFLECTIVE ARMS & BACK

YELLOW TAPE

yellow/silver 50mm reflective tape detail on arms and back

ALT-11143-N

ALT-11143-RB



ORANGE TAPE

orange/silver 50mm reflective tape detail on arms and back

ALT-11144-N

ALT-11144-RB





ARTISAN PREMIUM 100% COTTON REFLECTIVE PANTS

Weight 200g/m²

Fabric 100% cotton twill

Description elasticated back waist • five belt loops • two slanted front pockets • back pocket • triple needle top stitching • bar tacks at stress points

Colours N RB

WAIST STRETCHED (CM)

SIZE	28	30	32	34	36	38	40	42	44	46	48	50	52
CM	87	92	97	102	107	112	117	122	127	132	137	142	147

REFLECTIVE LEGS

YELLOW TAPE

yellow/silver 50mm reflective tape detail on legs

ALT-11151-N

ALT-11151-RB

ORANGE TAPE

orange/silver 50mm reflective tape detail on legs

ALT-11152-N

ALT-11152-RB





D59
FLAME RETARDANT
& ACID RESISTANT
SABS APPROVED



flame retardant
acid resistant.



ALT-1118

SABS FLAME RETARDANT & ACID RESISTANT REFLECTIVE JACKET

Weight 300g/m²

Fabric 100% D59 flame retardant and acid resistant cotton twill

Description open neck collar • front yoke panel • concealed zip • chest pocket features V-flap with concealed press stud closure • two front pockets • elasticated cuffs • triple needle top stitching • bar tacks at stress points • silver 50mm flame retardant reflective tape detail • SABS approved

Colours

N

CHEST (CM)

SIZE	32	34	36	38	40	42	44	46	48	50	52	54	56
CM	99	104	109	114	119	124	129	134	139	144	149	154	159



FLAME RETARDANT & ACID RESISTANT LOGO EMBROIDERED ON THE GARMENT



SABS WATERMARK ON THE REVERSE SIDE OF THE FABRIC



ALT-1119

SABS FLAME RETARDANT & ACID RESISTANT REFLECTIVE PANTS

Weight 300g/m²

Fabric 100% D59 flame retardant and acid resistant cotton twill

Description elasticated back waist • five belt loops • two slanted front pockets • back pocket • right leg features ruler pocket • silver 50mm flame retardant reflective tape detail • triple needle top stitching • bar tacks at stress points • SABS approved

Colours

N

WAIST STRETCHED (CM)

SIZE	28	30	32	34	36	38	40	42	44	46	48	50	52	54
CM	75	80	85	90	95	100	105	110	115	120	125	130	135	140




GRINDER WORKS



PRESS STUD POCKET CLOSURE, PEN POCKET & CONTRAST STITCHING



ALT-1116 CAST PREMIUM 100% COTTON DENIM JACKET

Fabric 100% cotton, 12oz denim

Description open neck collar • front yoke panel • concealed zip
• chest pocket features square flap with press stud closure and pen pocket • two front pockets
• contrast triple needle top stitching • bar tacks at stress points

Colours BU

HALF CHEST (CM)

SIZE	S	M	L	XL	2XL	3XL	4XL	5XL
CM	44	49	54	59	64	69	74	79

ALT-1117 CAST PREMIUM 100% COTTON DENIM PANTS

Fabric 100% cotton, 12oz denim

Description elasticated back waist • five belt loops • two slanted front pockets • back pocket • contrast triple needle top stitching • bar tacks at stress points

Colours BU

HALF WAIST STRETCHED (CM)

SIZE	28	30	32	34	36	38	40	42	44	46	48	50	52
CM	36,8	39,1	41,4	43,7	46	48,3	50,6	52,9	55,2	57,5	59,8	62,1	64,5



CAST PREMIUM 100% COTTON DENIM REFLECTIVE JACKET

Fabric 100% cotton, 12oz denim

Description open neck collar • front yoke panel • concealed zip • chest pocket features square flap with press stud closure and pen pocket • two front pockets • contrast triple needle top stitching • bar tacks at stress points

Colours BU

HALF CHEST (CM)

SIZE	S	M	L	XL	2XL	3XL	4XL	5XL
CM	44	49	54	59	64	69	74	79

REFLECTIVE ARMS

YELLOW TAPE

yellow/silver 50mm reflective tape detail on arms

ALT-11161-BU

ORANGE TAPE

orange/silver 50mm reflective tape detail on arms

ALT-11162-BU



REFLECTIVE ARMS & BACK

YELLOW TAPE

yellow/silver 50mm reflective tape detail on arms and back

ALT-11163-BU

ORANGE TAPE

orange/silver 50mm reflective tape detail on arms and back

ALT-11164-BU





CAST PREMIUM 100% COTTON DENIM REFLECTIVE PANTS

Fabric 100% cotton, 12oz denim

Description elasticated back waist • five belt loops • two slanted front pockets • back pocket • contrast triple needle top stitching • bar tacks at stress points

Colours BU

HALF WAIST STRETCHED (CM)

SIZE	28	30	32	34	36	38	40	42	44	46	48	50	52
CM	36,8	39,1	41,4	43,7	46	48,3	50,6	52,9	55,2	57,5	59,8	62,1	64,5

REFLECTIVE LEGS

YELLOW TAPE

yellow/silver 50mm reflective tape detail on legs

ALT-11171-BU

ORANGE TAPE

orange/silver 50mm reflective tape detail on legs

ALT-11172-BU





BAS-7774

MENS SIERRA JEANS

Fabric 100% cotton, 11oz denim

Description five pocket jean with rivets for extra durability
• YKK zip • contrast stitching

Colours

N

HALF WAIST (CM)

SIZE	28	30	32	34	36	38	40	42	44	46	48
CM	36	38.5	41	43.5	46	48.5	51	53.5	56	58.5	61





BAS-7775

LADIES SIERRA JEANS

Fabric 97% cotton, 3% spandex, 9.5oz

Description two curved front pockets with money pocket and rivets for durability • two back pockets with stitching detail • YKK zip • contrast stitching

Colours N

HALF WAIST (CM)

SIZE	28	30	32	34	36	38	40	42	44	46
CM	31.5	34	36.5	39	41.5	44	46.5	49	51.5	54





ALT-1102
TRADE POLYCOTTON PANTS

Weight 190g/m²

Fabric polycotton twill

Description elasticated back waist • five belt loops • two slanted front pockets • back pocket

Colours BL N RB

HALF-WAIST STRETCHED (CM)

SIZE	28	30	32	34	36	38	40	42	44	46	48	50	52
CM	36,8	39,1	41,4	43,7	46	48,3	50,6	52,9	55,2	57,5	59,8	62,1	64,5

ALT-1102-BL

ALT-1102-N

ALT-1102-RB





REFLECTIVE LEGS - YELLOW TAPE

yellow/silver 50mm reflective tape detail on legs

ALT-11021-BL

ALT-11021-N

ALT-11021-RB



REFLECTIVE LEGS - ORANGE TAPE

orange/silver 50mm reflective tape detail on legs

ALT-11022-BL

ALT-11022-N

ALT-11022-RB





ALT-1121
**SUPERVISOR PREMIUM CARGO
REFLECTIVE PANTS**

Weight 240g/m²

Fabric 100% J54 cotton twill

Description YKK zip • self-fabric waist with seven belt loops • cargo pockets with velcro closure flap • side entry front pockets • back pockets with velcro closure flap • back darts • silver 50mm reflective tape detail • top stitching detail • bar tacks at stress points

Colours N

WAIST (CM)

SIZE	28	30	32	34	36	38	40	42	44	46	48	50	52
CM	72	77	82	87	92	97	102	107	112	117	122	127	132







ALT-HLD
MENS HIGHLANDS CARGO SHORTS

Weight 245g/m²

Fabric 65% polyester, 35% cotton, brushed twill

Description slanted side pockets • billow cargo side pockets
• two back pockets with button down flap

Colours BL KH ST

	HALF WAIST (CM) STANDARD FIT									
SIZE	28	30	32	34	36	38	40	42	44	46
CM	37	39.5	42	44.5	47	49.5	52	54.5	57	59.5







ALT-ZIP
MENS CARGO ZIP-OFF PANTS



Weight 245g/m²

Fabric 65% polyester, 35% cotton, sanded twill

Description cargo pockets • side entry pockets • back pockets with button down flap • buttons on all pockets are concealed • half leg bermuda zip-off • inner drawstring

Colours BL BN KH ST

HALF WAIST (CM)

SIZE	30	32	34	36	38	40	42	44
CM	39.5	42	44.5	47	49.5	52	54.5	57



ALT-GCG IS AVAILABLE IN THESE 3 COLOURS SHOWN



ALT-GCG
MENS CARGO PANTS

Weight 245g/m²

Fabric 65% polyester, 35% cotton, sanded twill

Description side cargo pockets • back pockets with button down flap • slanted side pockets • self-fabric belt loops • back darts

Colours



HALF WAIST (CM)

SIZE	30	32	34	36	38	40	42	44
CM	39.5	42	44.5	47	49.5	52	54.5	57





NEW

BO-UB-29-A

LADIES SASHA STRETCH PANTS

Weight 230g/m²

Fabric 65% cotton, 33% polyester, 2% spandex

Description mock front pockets • elasticated waist • back pockets • tapered legs

Colours BL N

HALF WAIST (CM)

SIZE	XS	S	M	L	XL	2XL	3XL	4XL	5XL
CM	35	37.5	40	42.5	45.5	48.5	51.5	54.5	57.5







ALT-CHI
MENS CHINO PANTS

Weight 245g/m²

Fabric 65% polyester, 35% cotton, sanded twill

Description flat front • side pockets
• button down jet
back pocket

Colours BL KH N ST

HALF WAIST (CM)

SIZE	30	32	34	36	38	40	42	44
CM	39.5	42	44.5	47	49.5	52	54.5	57





ALT-1107
PRIME POLYCOTTON DUSTCOAT

Weight 190g/m²

Fabric polycotton twill

Description open neck collar • 4 button closure • angled chest pocket • two slanted bottom pockets • back panel features center seam and slit opening at bottom • garment features top stitching detail and bar tacks at stress points

Colours BL GY RB W

HALF CHEST (CM)

SIZE	S	M	L	XL	2XL	3XL	4XL	5XL
CM	50	55	60	65	70	75	80	85





ALT-FHC
MARRIOT POLYCOTTON HOUSECOAT

Weight 190g/m²

Fabric polycotton twill

Description open neck collar • 5 button closure • mitered chest pocket • two bottom pockets • bust darts • garment features top stitching and bar tacks at stress points • closed back, longer length garment

Colours KH N RB W

HALF CHEST (CM)

SIZE	S	M	L	XL	2XL	3XL	4XL
CM	51,5	55,5	59,5	63,5	67,5	71,5	75,5



PRICE INCLUDES SCREEN PRINT. SEE PAGE 3 FOR DETAILS.



NEW

FW-AL-2-F

ELEMENT FOOD SAFETY JACKET

Weight 190g/m²

Fabric polycotton twill

Description concealed placket with press studs • concealed inner chest pocket • elasticated cuffs

Colours (W)

HALF CHEST (CM)

SIZE	S	M	L	XL	2XL	3XL	4XL	5XL
CM	44	49	54	59	64	69	74	79

PRICE INCLUDES EMBROIDERY. SEE **PAGE 3** FOR DETAILS.

COVER YOUR BASES BY PAIRING OUR ELEMENT FOOD SAFETY JACKET OR COAT WITH OUR ELEMENT FOOD SAFETY PANTS.



NEW

FW-AL-3-F

ELEMENT FOOD SAFETY PANTS

Weight 190g/m²

Fabric polycotton twill

Description wide belt loops • back pocket with flap • elasticated waist • YKK zip

Colours (W)

WAIST (CM)

SIZE	28	30	32	34	36	38	40	42	44	46	48	50	52
CM	36.8	39.1	41.4	43.7	46	48.3	50.6	52.9	55.2	57.5	58.8	62.1	64.5



NEW

FW-AL-1-F



ELEMENT FOOD SAFETY COAT



Weight 190g/m²

Fabric polycotton twill

Description concealed placket with press studs • concealed inner chest pocket • elasticated cuffs

Colours RB W

HALF CHEST (CM)

SIZE	S	M	L	XL	2XL	3XL	4XL	5XL
CM	45	50	55	60	65	70	75	80

PRICE INCLUDES EMBROIDERY. SEE PAGE 3 FOR DETAILS.



FOOTWEAR

Our **FOOTWEAR** is engineered to meet the **HIGHEST QUALITY STANDARDS** and ensure that every step you take is backed by **COMFORT, SAFETY** and **RELIABILITY**.



ALT-1905
CRAFTSMAN CHELSEA BOOT STEEL TOE CAP



Material genuine split leather upper • **sole:** dual density PU



Description CE EN ISO 20345 approved • steel toe cap with impact protection of 200 joules • easy pull-on webbed loop • elasticated sides • heat resistant to 90 degrees celsius • oil resistant • acid resistant • slip resistant • shock absorption heel • wider fit for added comfort



Colours BL BN

UK Size 3 - 13



EASY PULL-ON
WEBBED LOOP





ALT-1904
MEGA SAFETY BOOT STEEL TOE CAP

Material genuine split leather upper
• **sole:** dual density PU

Description CE EN ISO 20345 approved • steel toe cap with impact protection of 200 joules
• lightweight and flexible • heat resistant to 90 degrees celsius • oil resistant • acid resistant • slip resistant • shock absorption heel • removable inner soles • wider fit for added comfort

Colours BL

UK Size 3 - 13



ALT-1903
MEGA SAFETY SHOE STEEL TOE CAP

Material genuine split leather upper • **sole:** dual density PU

Description CE EN ISO 20345 approved • steel toe cap with impact protection of 200 joules
• lightweight and flexible • heat resistant to 90 degrees celsius • oil resistant • acid resistant • slip resistant • shock absorption heel • removable inner soles • wider fit for added comfort

Colours BL

UK Size 3 - 13



NEW

FT-AL-7-F

FORCE COMBAT BOOT

Fabric **upper:** breathable canvas
 • **sole:** polyurethane

Description lace-up • non steel toe cap

Colours **BL**

UK Size 4 - 13



NEW

FT-AL-8-F

TRACE UTILITY SOCKS

Fabric 53% polyester, 29% viscose,
 16% polyamide, 2% elastane

Description padded sole

Colours **BL**

Size S & L



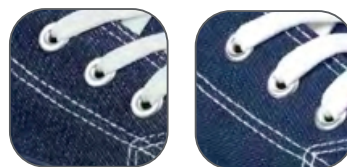
ALT-TRD
UNISEX TRENDI CANVAS SNEAKER

Material 80% cotton, 20% polyester canvas

Description canvas sneaker with rubber sole and toecap
• twin-needle stitching • cotton laces and lining • padded insoles • metallic eyelets

Colours BL BU N R W

UK Size 2 - 13



ALT-TRD & ALT-RTR
BOTH HAVE OPTIONS
AVAILABLE IN BLUE
(DENIM) & NAVY

BLUE (DENIM)

NAVY

ALT-RTR
UNISEX RETRO HIGH TOP CANVAS SNEAKER

Material 80% cotton, 20% polyester canvas

Description high top canvas sneaker with rubber sole and toecap • twin-needle stitching • cotton laces and lining • padded insoles • metallic eyelets

Colours BL BU N R W

UK Size 2 - 13





NEW



FO-AL-3-A
UNISEX COMFORT SLIP-ON SNEAKER

Fabric 100% polyester

Description knitted slip-on sneaker • padded insoles
• contrast heel tab

Colours BL BLW N

UK Size 2 - 13



DAWN
INSTITUTE



HI-VIZ HI-VIZ



Discover our exclusive range of **HIGH-QUALITY REFLECTIVE VESTS, T-SHIRTS, JACKETS, BOTTOMS** and **HEADWEAR** crafted using top-of-the-line high visibility fabrics. These fabrics are designed to **ENHANCE VISIBILITY** in low light conditions during the day and at night, ensuring **MAXIMUM SAFETY** and **PROTECTION**.



ALT-2000
SIGNAL HI-VIZ REFLECTIVE CAP

Fabric 100% polyester



Description 6 panel structured peak • 6 rows of stitching • 6 embroidered contrast eyelets • silver reflective binding detail • self-fabric velcro closure



Colours Y O



ALT-2001
ROADSIDE HI-VIZ REFLECTIVE HAT

Fabric 100% polyester



Description unstructured • contrast cord with adjustable toggle • silver reflective binding detail



Colours Y O





ALT-2002
BEACON HI-VIZ BEANIE

Fabric 100% acrylic

Description acrylic rib knit

Colours Y O



ALT-2003
YIELD HI-VIZ REFLECTIVE BANDANA

Fabric 100% polyester

Description silver reflective heat-pressed tape detail

Colours Y O





ALT-1201
DIRECTION EN4 HI-VIZ REFLECTIVE FULL ZIP VEST



Weight 120g/m²



Fabric 100% polyester tricot

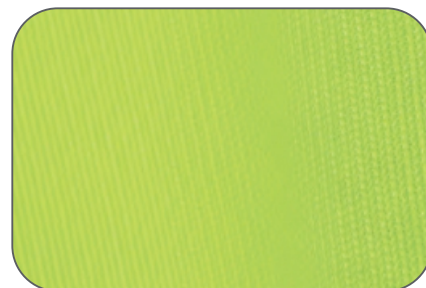
Description full zip • contrast binding detail • silver 50mm reflective tape detail • ID pouch on left chest • EN4 certified

Colours



CHEST (CM)

SIZE	S	M	L	XL	2XL	3XL	4XL	5XL
CM	107	115,5	124	132,5	141	149	157	165



100% POLYESTER TRICOT



ALT-1200

GUARD BASIC HI-VIZ REFLECTIVE BIB

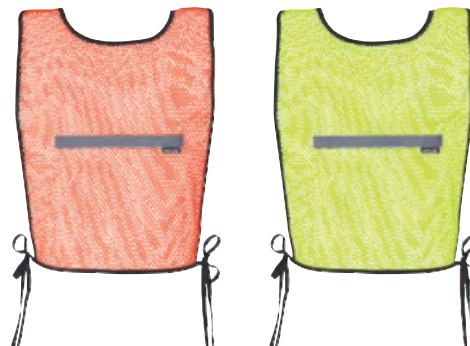
Weight 100g/m²

Fabric 100% polyester airtex mesh

Description contrast binding detail • adjustable ties
• silver 20mm reflective tape detail

Colours ○ ○

Width: 32cm **Height:** 37cm **Length:** 92cm





ALT-1202

**AIRPORT HI-VIZ
REFLECTIVE FULL ZIP VEST**



Weight 120g/m²

Fabric 100% polyester airtex mesh

Description full zip • contrast binding detail • white
50mm PVC prismatic reflective tape detail
• ID pouch on left chest

Colours Y

CHEST (CM)

SIZE	S	M	L	XL	2XL	3XL	4XL	5XL
CM	107	115,5	124	132,5	141	149	157	165



100% POLYESTER
AIRTEX MESH



WHITE 50MM PVC
PRISMATIC REFLECTIVE
TAPE DETAIL



ALT-1703
**METRO TWO-TONE HI-VIZ
REFLECTIVE ZIP-OFF JACKET**

Weight 150g/m²

Fabric 100% polyester tricot with airtex mesh

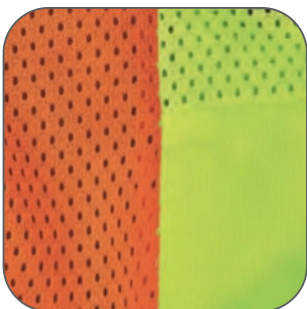
Description lightweight mixed fabric jacket • zip-off sleeves • contrast full zip • ID pouch on left chest • elasticated cuffs • elasticated waistband with front press stud closure • shoulder epaulettes with press studs • silver 50mm reflective tape detail

Colours



CHEST (CM)

SIZE	S	M	L	XL	2XL	3XL	4XL	5XL
CM	111,2	118,8	126,5	134,2	141,8	149,5	157	164



MIXED FABRIC



ZIP-OFF SLEEVES

PRICE INCLUDES SCREEN PRINT. SEE **PAGE 3** FOR DETAILS.



ALT-1300
ZONE HI-VIZ T-SHIRT

Weight 160g/m²

Fabric 100% polyester birdseye

Description short sleeve • self-fabric crew neck

Colours L O Y

HALF CHEST (CM)

SIZE	S	M	L	XL	2XL	3XL	4XL	5XL
CM	50	53	56	59	62	65	68	71





ALT-1301
CONSTRUCTION HI-VIZ REFLECTIVE T-SHIRT

Weight 160g/m²

Fabric 100% polyester birdseye

Description short sleeve • self-fabric crew neck • silver 50mm reflective heat-pressed tape detail

Colours L O Y

HALF CHEST (CM)

SIZE	S	M	L	XL	2XL	3XL	4XL	5XL
CM	50	53	56	59	62	65	68	71

PAIR THE CONSTRUCTION HI-VIZ REFLECTIVE T-SHIRT (ALT-1301) WITH THE SUPERVISOR PREMIUM CARGO REFLECTIVE PANTS (ALT-1121) FOR A COMPLETE LOOK. SEE PAGE W 64 FOR ALT-1121.



PRICE INCLUDES SCREEN PRINT. SEE PAGE 3 FOR DETAILS.



ALT-1400
SECTOR HI-VIZ GOLF SHIRT

Weight 160g/m²

Fabric 100% polyester birdseye

Description knitted collar • three button placket

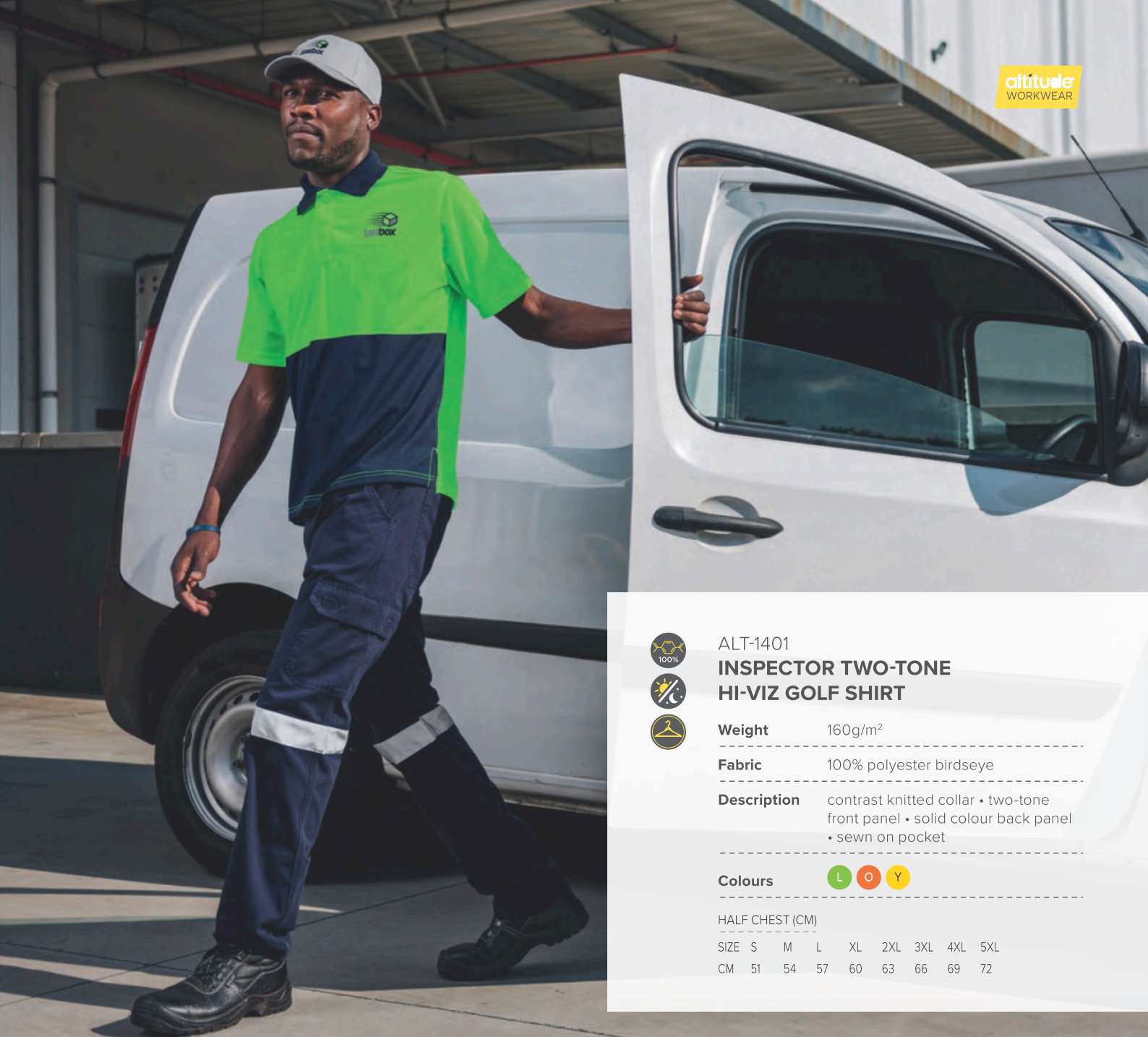
Colours L O Y

HALF CHEST (CM)

SIZE	S	M	L	XL	2XL	3XL	4XL	5XL
CM	51	54	57	60	63	66	69	72



PRICE INCLUDES SCREEN PRINT. SEE **PAGE 3** FOR DETAILS.



ALT-1401
**INSPECTOR TWO-TONE
HI-VIZ GOLF SHIRT**

Weight 160g/m²

Fabric 100% polyester birdseye

Description contrast knitted collar • two-tone front panel • solid colour back panel • sewn on pocket

Colours L O Y

HALF CHEST (CM)

SIZE	S	M	L	XL	2XL	3XL	4XL	5XL
CM	51	54	57	60	63	66	69	72

PAIR THE INSPECTOR TWO-TONE HI-VIZ GOLF SHIRT (ALT-1401) WITH THE SUPERVISOR PREMIUM CARGO REFLECTIVE PANTS (ALT-1121) FOR A COMPLETE LOOK. SEE PAGE W 64 FOR ALT-1121.



PRICE INCLUDES SCREEN PRINT. SEE PAGE 3 FOR DETAILS.



ALT-1402

SURVEYOR TWO-TONE HI-VIZ REFLECTIVE GOLF SHIRT



Weight 160g/m²



Fabric 100% polyester birdseye



Description contrast knitted collar • two-tone front and back panel • silver 50mm reflective tape detail

Colours L O Y

HALF CHEST (CM)

SIZE	S	M	L	XL	2XL	3XL	4XL	5XL
CM	51	54	57	60	63	66	69	72





NEW

GS-AL-293-A

**LONG SLEEVE SURVEYOR
TWO-TONE HI-VIZ REFLECTIVE
GOLF SHIRT**

Weight 160g/m²

Fabric 100% polyester birdseye

Description contrast knitted collar • two-tone front and back panel • silver 50mm reflective tape detail

Colours



HALF CHEST (CM)

SIZE	S	M	L	XL	2XL	3XL	4XL	5XL
CM	51	54	57	60	63	66	69	72

STAY VISIBLE and stylish in our Surveyor **HI-VIZ GOLF SHIRT** now available in long sleeves



ALT-1500

ACCESS VENTED TWO-TONE REFLECTIVE WORK SHIRT

Weight 145g/m²

Fabric 100% cotton

Description two chest pockets with flaps • vent under arm • garment features back vent below yoke with 3 bar tacks
 • silver 50mm reflective tape detail
 • double needle top stitching detail

Colours



HALF CHEST (CM)

SIZE	S	M	L	XL	2XL	3XL	4XL	5XL
CM	52	57	62	67	72	77	82	87





PAIR THE ACCESS VENTED TWO-TONE REFLECTIVE WORK SHIRT (ALT-1500) WITH THE SUPERVISOR PREMIUM CARGO REFLECTIVE PANTS (ALT-1121) FOR A COMPLETE LOOK.

ALT-1121 SUPERVISOR PREMIUM CARGO REFLECTIVE PANTS

Weight 240g/m²

Fabric 100% J54 cotton twill

Description YKK zip • self-fabric waist with seven belt loops • cargo pockets with velcro closure flap • side entry front pockets • back pockets with velcro closure flap • back darts • silver 50mm reflective tape detail • top stitching detail • bar tacks at stress points

Colours



WAIST (CM)

SIZE	28	30	32	34	36	38	40	42	44	46	48	50	52
CM	72	77	82	87	92	97	102	107	112	117	122	127	132



DETACHABLE HOOD WITH
ADJUSTABLE TOGGLES

WJ-AL-5-F
DEFENDER HI-VIZ JACKET

Fabric 100% polyester • two-tone jacket with silver 25mm reflective tape detail • storm flap with chunky zip and press studs • welted pockets with chunky zips and zip pullers • elasticated cuffs with adjustable velcro tab • inner pocket • detachable hood with adjustable toggles



HALF CHEST (CM) **STANDARD FIT**

S	M	L	XL	2XL	3XL	4XL	5XL
58	61	64	67	70	73	76	79



ID POCKET ON RIGHT CHEST



WJ-AL-6-F
FOUNDATION HI-VIZ PADDED JACKET

Fabric 100% polyester • two-tone jacket with silver 50mm reflective tape detail • chunky zip • dual pockets with welted velcro closure flap • elasticated cuffs and waist • ID pocket on right chest

N O Y

HALF CHEST (CM) **STANDARD FIT**

S	M	L	XL	2XL	3XL	4XL	5XL
60	64	68	72	76	80	84	88



PRICE INCLUDES EMBROIDERY.



CONCEALED, FOLDAWAY HOOD WITH VELCRO CLOSURE



ALT-1701

HAZARD PADDED TWO-TONE HI-VIZ REFLECTIVE JACKET



Fabric

100% polyester, 210D oxford with milky coating, padded and lined in quilted Taffeta



Description

two-tone jacket with silver 50mm reflective tape detail • concealed zip features storm flap with press stud closure • inner pockets • eyelets under arms • concealed hood with drawcord and toggles • open end sleeve with knitted inner cuff • welt pockets with velcro closure flap • taped seams



Colours



CHEST (CM)

SIZE	S	M	L	XL	2XL	3XL	4XL	5XL
CM	118	126	134	142	150	158	166	174



QUILTED TAFETTA LINING & INNER POCKET



OPEN END SLEEVE



KNITTED INNER SLEEVE CUFF



PRICE INCLUDES EMBROIDERY. SEE PAGE 3 FOR DETAILS.



10

GROUND
FLOOR OFFICE

SIRON
fire protection





ALT-1702
**TECHNO PADDED HI-VIZ
REFLECTIVE BUNNY JACKET**

Fabric shell: 50% polyester, 50% cotton • inner: 100% polyester polar fleece

Description funnel collar • black d-ring tag at upper right front panel • ID pouch on left chest • multi-function sleeve pocket with chunky zip closure • right chest pocket with diagonal chunky zip • utility chest pocket with concealed velcro flap • zip-off sleeves • inner pockets • contrast ribbed cuffs and waistband • slanted welt pockets • silver 50mm reflective tape detail

Colours



HALF CHEST (CM)

SIZE	S	M	L	XL	2XL	3XL	4XL	5XL
CM	58	62	66	70	74	78	82	86

ZIP-OFF SLEEVES



POLAR FLEECE LINING



PRICE INCLUDES EMBROIDERY. SEE PAGE 3 FOR DETAILS.



RAINWEAR

RAINWEAR



Experience ultimate protection with our **RAINWEAR** collection, crafted from **PREMIUM QUALITY POLYESTER** fabrics that boast exceptional **DURABILITY** and **RESILIENCE**, making them ideal for **WET WEATHER** conditions.



NEW

WR-AL-5-F

**STORM RUBBERISED
POLYESTER/PVC RAINCOAT**

Weight 280g/m² **Fabric** 28mm PVC polyester
• hood • concealed storm flap • open end sleeves

N **Y**

HALF CHEST (CM) **STANDARD FIT**

S	M	L	XL	2XL	3XL	4XL	5XL
64	66	68	70	72	74	76	78





NEW

WR-AL-6-F

**HURRICANE RUBBERISED
POLYESTER/PVC RAINSUIT**

Weight 280g/m² **Fabric** 28mm PVC polyester

- **jacket:** hood • elasticated cuff • storm flap
- **pants:** fully elasticated waistband

N **Y**

- the suit size is based on the size of the jacket

JACKET

S	M	L	XL	2XL	3XL	4XL	5XL
130	134	138	142	146	150	154	158

PANTS

S	M	L	XL	2XL	3XL	4XL	5XL
112	116	120	124	128	132	136	140





NEW

WR-AL-7-F

TORNADO HI-VIZ REFLECTIVE RUBBERISED POLYESTER/PVC RAINSUIT

Weight 280g/m² **Fabric** 28mm PVC polyester

• **jacket:** hood • elasticated cuff • storm flap • silver 25mm reflective tape detail • **pants:** fully elasticated waistband • silver 25mm reflective tape detail

N O Y

• the suit size is based on the size of the jacket

JACKET

S	M	L	XL	2XL	3XL	4XL	5XL
130	134	138	142	146	150	154	158

PANTS

S	M	L	XL	2XL	3XL	4XL	5XL
112	116	120	124	128	132	136	140





SECURITY

Introducing our high-performance **SECURITY** wear, featuring a range of **PREMIUM** jerseys, shirts, pants, boots and belts designed to provide unbeatable **PROTECTION** and **FUNCTIONALITY** for **SECURITY PROFESSIONALS**.



NEW
KZ-AL-2-F
FORCE SLEEVELESS JERSEY

Fabric 100% acrylic

Description sleeveless • v-neck • epaulettes on shoulder • rib knit design

Colours **BL** **N**

HALF CHEST (CM) STANDARD FIT

SIZE	S	M	L	XL	2XL	3XL	4XL	5XL
CM	49	52	55	58	61	64	67	70





NEW
KZ-AL-1-F
FORCE LONG SLEEVE JERSEY

Fabric 100% acrylic

Description long sleeve • v-neck • epaulettes on shoulder • elbow pads • rib knit design

Colours **BL** **N**

HALF CHEST (CM) STANDARD FIT

SIZE	S	M	L	XL	2XL	3XL	4XL	5XL
CM	51	54	57	60	63	66	69	72





GET THE JOB DONE
WITH THESE PRACTICAL
AND DURABLE PANTS.



NEW

PW-AL-2-F
FORCE PANTS

Fabric 100% polyester

Description wide belt loops • pleats • back welt pockets with button

Colours BL GY N

HALF WAIST (CM)

SIZE	28	30	32	34	36	38	40	42	44	46	48	50	52
CM	36.5	39	41.5	44.5	47	49.5	52	54.5	57	59.5	62	64.5	67



NEW

SH-AL-2-F
FORCE COMBAT SHIRT

Weight 190g/m²

Fabric polycotton twill

Description short sleeve • epaulettes on shoulder
• pockets with button down flap

Colours **BL** **N**

HALF CHEST (CM)

SIZE	S	M	L	XL	2XL	3XL	4XL	5XL
CM	51.5	53	57	60	63	66	69	72

PRICE INCLUDES EMBROIDERY. SEE **PAGE 3** FOR DETAILS.



NEW

PW-AL-1-F
FORCE MOCK COMBAT PANTS

Weight 190g/m²

Fabric polycotton twill

Description wide belt loops • concealed button fly • back pocket
with concealed button down flap • mock side pockets
• drawcord on bottom hem

Colours **BL** **N**

HALF WAIST (CM)

SIZE	28	30	32	34	36	38	40	42	44	46	48	50	52
CM	35.5	38	40.5	43	45.5	48	50.5	53	55.5	58	60.5	63	65.5



NEW

PW-AL-3-F

FORCE WEB BELT

Fabric 100% nylon

Description adjustable • metal buckle

Colours **BL**

Size one size



NEW

FT-AL-8-F

TRACE UTILITY SOCKS

Fabric 53% polyester, 29% viscose,
16% polyamide, 2% elastane

Description padded sole

Colours **BL**

Size S & L



NEW

FT-AL-7-F

FORCE COMBAT BOOT

Fabric upper: breathable canvas
• **sole:** polyurethane

Description lace-up • non steel toe cap

Colours **BL**

UK Size 4 - 13





SAFETY WARMWEAR

When working in cold climates or extremely low temperatures, keeping your team **WARM AND FOCUSED ON THE JOB** is essential. Our safety warmwear provides the perfect solution to ensure that your team has the right gear to stay warm and **MAINTAIN THEIR PERFORMANCE**.



NEW
JC-AL-125-A
ALARIS PADDED JACKET

Fabric 100% oxford nylon

Description fully padded quilted inner • open end sleeves • two bottom patch pockets with press stud closure • shoulder epaulettes with press studs

Colours BL N

HALF CHEST (CM)

SIZE	S	M	L	XL	2XL	3XL	4XL	5XL
CM	61	64	67	70	72	77	80	82








DRAGON
SECURITY



DETACHABLE ZIP-OFF HOOD



SHOULDER EPAULETTES



QUILTED TAFETTA LINING



OPEN END SLEEVE



KNITTED INNER SLEEVE CUFF



ALT-1700
SENTRY PARKA JACKET

Fabric 70D / 190T 100% polyester, padded and lined in quilted Tafetta

Description detachable hood with drawcord and toggles • concealed zip features storm flap with press stud closure • inner pocket • open end sleeve with knitted inner cuff • two bottom patch pockets with press stud closure flap • jacket features chest patch pocket with press stud closure flap • eyelets under arms • shoulder epaulettes with press studs

Colours BL N OL

CHEST (CM)

SIZE	S	M	L	XL	2XL	3XL	4XL	5XL
CM	118	126	134	142	150	158	166	174



PRICE INCLUDES EMBROIDERY. SEE **PAGE 3** FOR DETAILS.



bvm
petroleum

shut



CONCEALED, FOLDAWAY HOOD WITH VELCRO CLOSURE



QUILTED TAFETTA LINING & INNER POCKET



OPEN END SLEEVE



KNITTED INNER SLEEVE CUFF

ALT-1701

HAZARD PADDED TWO-TONE HI-VIZ REFLECTIVE JACKET

Fabric 100% polyester, 210D oxford with milky coating, padded and lined in quilted Tafetta

Description two-tone jacket with silver 50mm reflective tape detail • concealed zip features storm flap with press stud closure • inner pockets • eyelets under arms • concealed hood with drawcord and toggles • open end sleeve with knitted inner cuff • welt pockets with velcro closure flap • taped seams

Colours L O Y

CHEST (CM)

SIZE	S	M	L	XL	2XL	3XL	4XL	5XL
CM	118	126	134	142	150	158	166	174



PRICE INCLUDES EMBROIDERY. SEE PAGE 3 FOR DETAILS.



KB
CONSTRUCTION



ALT-1702
**TECHNO PADDED HI-VIZ REFLECTIVE
BUNNY JACKET**

Fabric shell: 50% polyester, 50% cotton
inner: 100% polyester polar fleece

Description funnel collar • black d-ring tag at upper right front panel • ID pouch on left chest • multi-function sleeve pocket with chunky zip closure • right chest pocket with diagonal chunky zip • utility chest pocket with concealed velcro flap • zip-off sleeves • inner pockets • contrast ribbed cuffs and waistband • slanted welt pockets • silver 50mm reflective tape detail

Colours N O Y

HALF CHEST (CM)

SIZE	S	M	L	XL	2XL	3XL	4XL	5XL
CM	58	62	66	70	74	78	82	86

ZIP-OFF SLEEVES



POLAR FLEECE LINING



PRICE INCLUDES EMBROIDERY. SEE PAGE 3 FOR DETAILS.





ALT-1800
SHIFT SINGLE-LINED FREEZER JACKET

Fabric **shell:** 105g/m², 100% polyester oxford
 • **inner:** 180g/m², 100% polyester quilted pongee

Description hooded • monza style chest pocket • two monza style bottom pockets • elasticated cuffs • rated to work in environments as low as -5 degrees celsius

Colours **N**

HALF CHEST (CM)

SIZE	S	M	L	XL	2XL	3XL	4XL	5XL
CM	62,5	65	67,5	70	72,5	75	77,5	80



ELASTICATED CUFFS →

PRICE INCLUDES EMBROIDERY. SEE **PAGE 3** FOR DETAILS.

ALT-1801
SHIFT SINGLE-LINED FREEZER PANTS

Fabric **shell:** 105g/m², 100% polyester oxford
 • **inner:** 180g/m², 100% polyester quilted pongee

Description fully elasticated waistband • rated to work in environments as low as -5 degrees celsius

Colours **N**

HALF WAIST STRETCHED (CM)

SIZE	S	M	L	XL	2XL	3XL	4XL	5XL
CM	48,5	51	53,5	56	58,5	61	63,5	66







ALT-1802
ARCTIC DOUBLE-LINED FREEZER JACKET

Fabric **shell:** 105g/m², 100% polyester oxford
 • **padding:** 250g/m², 100% polyester wadding
 • **lining:** 190g/m², 80% polyester 20% cotton twill

Description hooded • monza style chest pocket • two monza style bottom pockets • elasticated cuffs
 • rated to work in environments as low as -15 degrees celsius

Colours **N**

HALF CHEST (CM)

SIZE	S	M	L	XL	2XL	3XL	4XL	5XL
CM	65	67,5	70	72,5	75	77,5	80	82,5



ELASTICATED CUFFS →

PRICE INCLUDES EMBROIDERY. SEE **PAGE 3** FOR DETAILS.

ALT-1803
ARCTIC DOUBLE-LINED FREEZER PANTS

Fabric **shell:** 105g/m², 100% polyester oxford
 • **padding:** 250g/m², 100% polyester wadding
 • **lining:** 190g/m², 80% polyester 20% cotton twill

Description fully elasticated waistband • rated to work in environments as low as -15 degrees celsius

Colours **N**

HALF WAIST STRETCHED (CM)

SIZE	S	M	L	XL	2XL	3XL	4XL	5XL
CM	48,5	51	53,5	56	58,5	61	63,5	66



A man with a beard and short hair, wearing a bright red long-sleeved work shirt and matching red trousers, stands with his arms crossed. He is wearing black rubber boots. He is leaning against a wall made of vertical corrugated metal sheets that are heavily rusted and weathered. The ground he is standing on appears to be wooden planks or a pallet. In the top left corner, there is a yellow rectangular logo with the word 'altitude' in a bold, lowercase font and 'WORKWEAR' in a smaller, uppercase font below it.

altitude
WORKWEAR

No matter the industry,
whether you're in
Agriculture, Mining,
Construction or
Manufacturing –
ALTITUDE WORKWEAR
has been designed with
A PRIMARY FOCUS
ON SAFETY,
DURABILITY and
RELIABILITY.